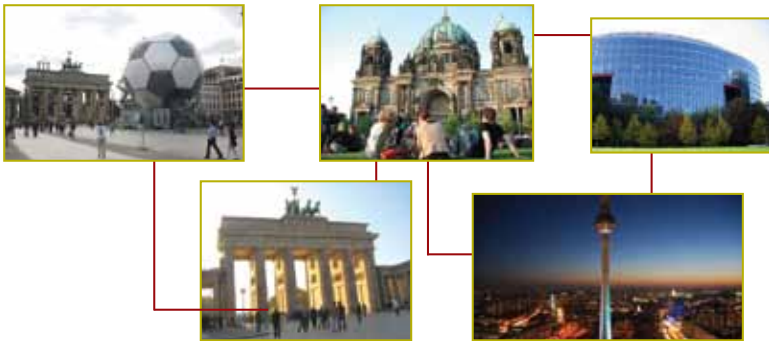




The 6th International Symposium on Women's Health Issues in Thrombosis and Haemostasis

■ February 13-15, 2015 Berlin, Germany



■ Chairmen: B. Brenner, Israel
I.A. Greer, UK

Conference Secretariat
PALEXTOUR פאלקסטור

E-mail: whith@palex.co.il

Website: <http://www.whith.org>

CHAIRMEN

B. Brenner – Israel

I. Greer – United Kingdom

International Advisory Board

Aharon A. – Israel

Bates S.M. – Canada

Bauersachs R. – Germany

Bussel J.B. – USA

Cattaneo M. – Italy

Conard J. – France

Decousus H. – France

Dekker G. – Australia

Eichinger S. – Austria

Elkayam U. – USA

Estelles A. – Spain

Grand B. – Argentina

Grandone E. – Italy

Greaves M. – United Kingdom

Gris J.C. – France

Hoirisch Clapauch S. – Brazil

Huisman M. – The Netherlands

Isermann B. – Germany

James A. – USA

Kaaja R. – Finland

Kadir R.A. – United Kingdom

Kakkar A.K. – United Kingdom

Karimi M. – Iran

Karumanchi A. – USA

Kenet G. – Israel

Konkle B.A. – USA

Kouides P.A. – USA

Levi M. – The Netherlands

Lindquist P. – Sweden

Makatsaria A. – Russia

Martinelli I. – Italy

McLintock C. – New Zealand

Middeldorp S. – The Netherlands

Monreal M. – Spain

Muszbek L. – Hungary

Nowak-Gottl U. – Germany

Pabinger I. – Austria

Papadakis E. – Greece

Phillip C.S. – USA

Nelson-Piercy C. – United Kingdom

Prochazka M. – Czech Republic

Rand J. – USA

Rodger M. – Canada

Rosing J. – The Netherlands

Sandset P.M. – Norway

Sarto A. – Argentina

Simioni P. – Italy

Spyropoulos A.C. – USA

Stasi R. – United Kingdom

Weiler H. – USA

Yagel S. – Israel

Zotz R.B. – Germany

Dear Colleagues,

It is our great honor to announce the 6th International Symposium on Women's Health Issues in Thrombosis and Haemostasis to be held on **February 13–15, 2015 at the Intercontinental Hotel in Berlin, Germany.**

This biannual meeting, focusing on novel pathophysiological mechanisms and emerging clinical issues related to haemostasis, thrombosis and vascular biology in women, has become a major event attracting international community of physicians and scientists.

Haematologists, gynecologists, obstetricians, cardiologists, neonatologists and all those involved in research and clinical practice in this rapidly evolving field will find interest in the contents of the meeting.

As in previous years, we anticipate fruitful discussions in friendly atmosphere to be a seminal part of this symposium.

We look forward to seeing you in Berlin in February 2015.

Benjamin Brenner

Ian Greer

Symposium Chairmen

Preliminary Timetable

Friday, February 13, 2015	
Morning	Registration and Distribution of Material Satellite Symposia
Lunch	Satellite Symposia
Afternoon	Scientific Sessions
Evening	Opening Ceremony & Get - Together Reception
Saturday, February 14, 2015	
Morning	Scientific Sessions
Lunch	Satellite Symposia
Afternoon	Scientific Sessions
Evening	Farewell Dinner (optional)
Sunday, February 15, 2015	
Morning	Scientific Sessions
Lunch	Satellite Symposia
Afternoon	Scientific Sessions

MAIN Topics

- Acquired Bleeding Disorders
- Antiphospholipid Syndrome
- Anti-Thrombotic Agents
- Arterial Thrombosis
- Assisted Reproductive Techniques
- Autoimmune Diseases
- Cancer and Thrombosis
- Diabetes
- Fetal Growth Restriction
- Fetal Haemostasis
- Fetal Implantation
- Fibrinolytic Mechanisms
- Gene Targeting in Coagulation
- Heart Valves Diseases
- Hormone Replacement Therapy
- Infertility
- Inflammatory Disorders
- Inherited Bleeding Disorders
- Inherited Thrombophilia
- Intravascular Coagulation
- Myocardial Infarction
- Neonatal Haemostasis
- Obesity
- Oral Contraceptives
- Placental Abruptio
- Placental Angiogenesis
- Post-Partum Hemorrhage
- Pre-Eclampsia
- Pregnancy Loss
- Stroke
- Thrombocytopenia
- Thrombotic Microangiopathy
- Trophoblast Invasion
- Trophoblast Physiology
- Venous Thromboembolism

Under the Auspices of

The International Society on Thrombosis and Haemostasis

The Mediterranean League against Thromboembolic Diseases

Call For Abstracts

Participants are requested to submit an abstract to the secretariat no later than October 10, 2014 together with the registration form and fees. Abstracts will be reviewed and assigned to appropriate sessions. Authors will be notified regarding abstract acceptance. Accepted abstracts will be presented during a poster session. Abstracts selected by the Scientific Committee will be presented as short Oral Communications during the sessions.

METHOD OF SUBMISSION

- 1) Abstracts should be submitted by email to: whith@palex.co.il
- 2) Inclusion in the scientific program and book of abstracts is dependent on registration to the meeting. Presenting authors must be registered by Nov 30, 2014.
- 3) All accepted abstracts will be published in a special issue of Thrombosis Research that will be distributed at the symposium. The abstract submitter will be required to confirm the Abstract Submitters' declaration.

GUIDELINES FOR SUBMISSION

- 1) The abstract should be as informative as possible:
 - i) state specific object of abstract
 - ii) state method used, if pertinent
 - iii) summarize results obtained
 - iv) state conclusions reached
- 2) Abstract length should not exceed 250 words
 - i) Abstract title – limited to 25 words in UPPER CASE
 - ii) Abstract text – limited to 250 words (please note: word count is affected when graphs/tables/images are added)

- 3) Standard abbreviations may be used.
- 4) All abstracts must be submitted and presented in clear English with accurate grammar and spelling of a quality suitable for publication. If you need help, please arrange for the review of your abstract by a colleague who is a native English speaker, by a university scientific publications office (or other similar facility) or by a copy editor, prior to submission.
- 5) Presenting author contact information must be included:
 - i) Authors and co-authors' details
 - ii) Email address
 - iii) Full first and family name(s)
 - iv) Affiliation information: department, institution/hospital, city, state (if relevant), country

FAXED ABSTRACTS ARE NOT ACCEPTABLE



REGISTRATION

Registration fees per person	Until Nov. 30th, 2014	Until Jan. 31st, 2015	From Feb. 1st, 2015 and on-site
Participants – Physicians and scientists	€ 500	€ 550	€ 600
Residents *	€ 350	€ 400	€ 450
Accompanying Persons	€ 120	€ 130	€ 140
Farewell Dinner (optional)	€ 75		

* Refers to non-tenured junior scientists. Registration form must be accompanied by a letter from their head of department confirming their status

Please Note: early registration fees are only available for those who register and make full payment before Dec 1, 2014. If you register and do not make payment by Dec 1, 2014 you should make payment for the late registration fees.

Fees for Participants include:

- Participation in scientific sessions
- Printed material of the symposium
- Entrance to the exhibition
- Daily coffee breaks and light lunch
- Get-Together Reception on Friday

Fees for ACCOMPANYING PERSONS include:

- Get-Together Reception on Friday
- Grand City Tour of Berlin, Saturday, February 15th, 10:00 – 13:00.

CANCELLATION POLICY

Refund of registration fees will be as follows:

- Postmarked before November 15, 2014 - 100% refund, minus €50 handling fee
- Postmarked from November 16, 2014 - 50% refund
- On cancellations sent after January 2, 2015 - no refund

Please fill out the registration form (available at www.whith.org) and fax it to the Secretariat: +972 - 4834 6322 or send by email to whith@palex.co.il along with your payment as detailed in the form.

HOTEL ACCOMMODATIONS

The Conference Secretariat is offering special rates for accommodation

Venue Hotel	Class	Booked until Dec 1, 2014		Booked from Dec 2, 2014	
		Single	Double	Single	Double
InterContinental Berlin	Superior	€ 150	€ 175	€ 170	€ 195
	Deluxe	€ 184	€ 209	€ 204	€ 229

Rates are shown per room per night including breakfast.

The hotel is located in the heart of the city between world-famous Potsdamer Platz and the Kurfurstendamm Boulevard, not far from the Government Quarter. The Reichstag and Memorial Church are within walking distance. The InterContinental Berlin is a perfect venue for business meetings and conferences as well as the perfect base for exploring Berlin.

BOOKING

The WHITH website will post a link for on-line reservations.
Reservations need to be guaranteed by credit card.

CANCELLATION OF ACCOMMODATION

Less than 48 hours prior to arrival or no-show – no refund

IMPORTANT NOTES

Participant will be personally responsible for his room rate and extra charges (i.e., minibar, telephone, laundry charges, etc.) and will settle these individually with the hotel prior to departure.

Official check-in time for the hotel is 15:00 and check-out is 12:00. Early check-ins and late check-outs will be approved upon availability and requests.



General Information

VENUE

InterContinental Berlin

Budapester Strasse 2, 10787 Berlin, Germany

Tel: +49 (0)30 2602 1161 Fax: +49 (0)30 2615 057

Web: www.berlin.intercontinental.com

LANGUAGE

English is the official language of the symposium.

CLIMATE

The weather in Berlin in February is cool. Temperatures range from -3°C to 4°C .

CLOTHING

Informal for all occasions

LIABILITY & INSURANCE

The symposium secretariat and organizers cannot accept liability for personal accidents or loss of or damage to private property of participants and accompanying persons. Participants are advised to take out their own personal travel and health insurance for their trip.

OFFICIAL LETTER OF INVITATION

Official letters of invitation designed to help overcome administrative difficulties in certain countries will be sent upon request. It must be understood that such letters do not represent a commitment on the part of the organizing committee or symposium organizers to provide any financial assistance. If you require such a letter, please apply to the secretariat.

VISAS

Participants are requested to check with the consulate / embassy of Germany or diplomatic mission in their home country or with their travel agency for visa requirements. It is the responsibility of the participant to obtain a visa if required.

TRANSPORTATION TO BERLIN

Berlin Tegel Airport (TXL)

The InterContinental Berlin Hotel is located just 10 km/5.5 mi from Berlin Tegel Airport (TXL). Taxi charge (one way): € 20 (30 minute ride)

Berlin SchÖnefeld Airport (SXF)

The InterContinental Berlin Hotel is located just 20 km/13 mi from Berlin SchÖnefeld Airport (SXF).Taxi charge (one way): € 45 (40 minutes)

Secretariat and Symposium Organizers

WHITH SYMPOSIUM c/o Palex Tours Ltd. Israel

59 Ha'atzmaut Road, PO Box 33018; Haifa 33033, Israel

Tel: +972 - 4666 0510/11; Fax: +972 - 4834 6322

E-mail: whith@palex.co.il; Website: www.whith.org

